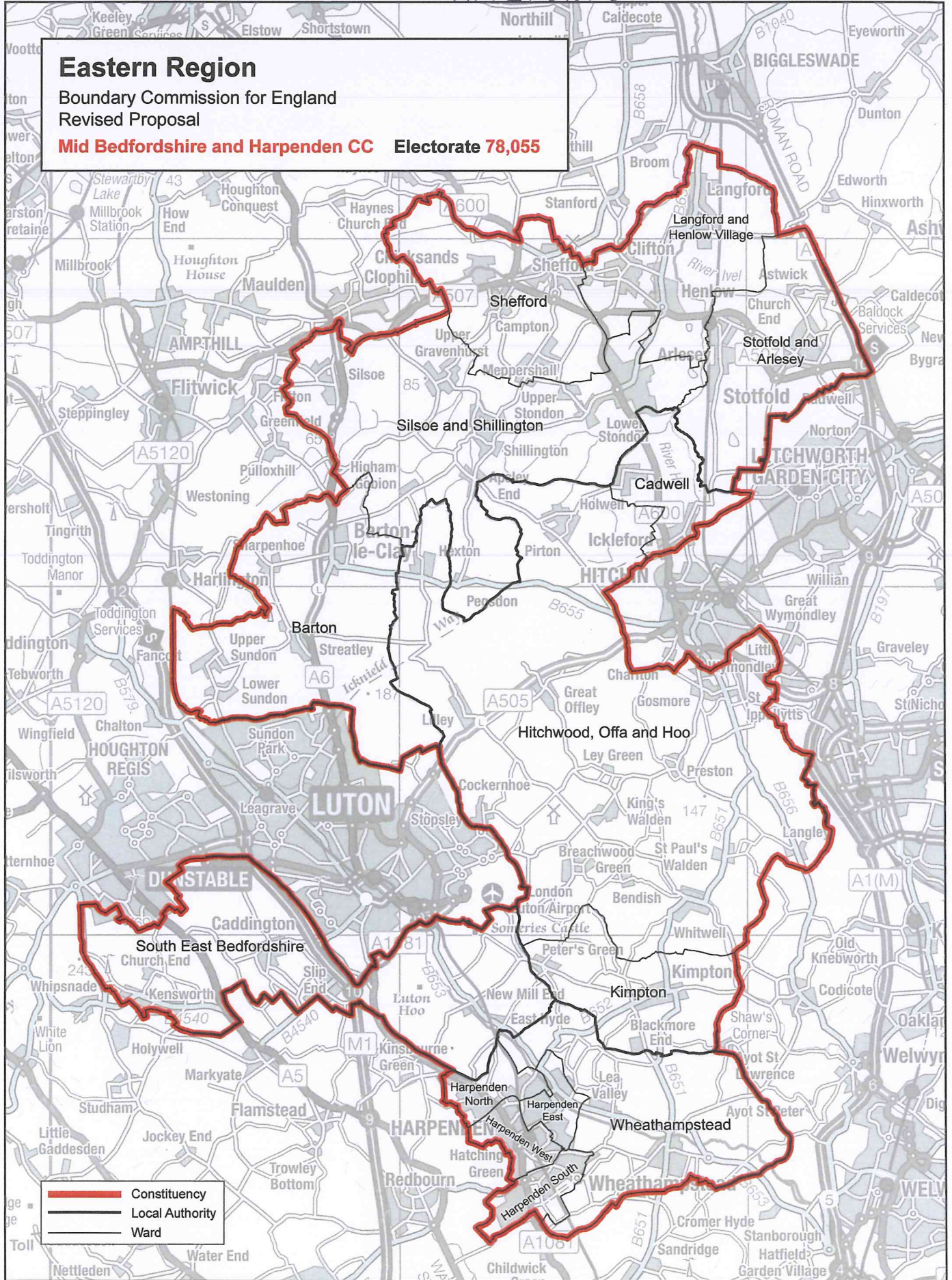


# Eastern Region

Boundary Commission for England  
Revised Proposal

**Mid Bedfordshire and Harpenden CC** Electorate **78,055**



This mapping extract has been produced from Ordnance Survey's mapping data on behalf of the Boundary Commission for England © Crown copyright 2012.

## Mid Bedfordshire and Harpenden CC